

Floral Collection Flower Sugar

Free Pattern

# Sugar Sugar



58" x 75 1/2"

To view the new "Floral Collection Flower Sugar" and to download Kristyne Czepuryk's free pattern, Please visit [www.lecien.co.jp/en/hobby](http://www.lecien.co.jp/en/hobby) or [www.lecienusa.com](http://www.lecienusa.com)



Designed by Kristyne Czepuryk

Pretty by Hand  
[www.prettybyhand.com](http://www.prettybyhand.com)

**LECIEN**  
LECIEN U.S.A., Inc.

## Fabric Requirements

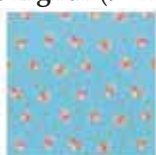
- For flowers & rectangles, a **Fat Eighth** (9" x 20") each of these 25 Lecien "Floral Collection Flower Sugar" prints:



30363-30



30363-50



30363-70



30363-90



30364-20



30364-30



30364-60



30364-70



30364-90



30365-20



30365-31



30365-60



30365-70



30365-90



30366-20



30366-30



30366-50



30366-70



30366-90



30367-20



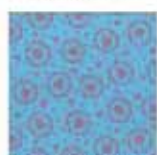
30367-30



30367-50



30367-60



30367-70



30367-90

- For flower centers,  $\frac{1}{8}$  yd each of these Lecien "Basics" gingham prints:



4521-G



4521-Y

- For background, 2  $\frac{1}{4}$  yds of this Lecien "Quilter's First" dot print:



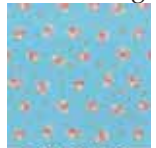
30297-20

- For backing, 3  $\frac{3}{4}$  yds of this Lecien "Floral Collection Flower Sugar" print:



30363-20

- For binding,  $\frac{1}{2}$  yd of this Lecien "Floral Collection Flower Sugar" print:



30363-70

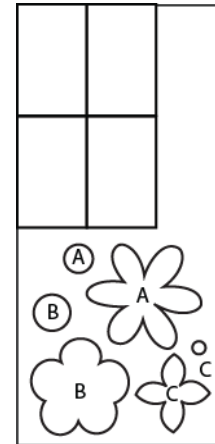
- For machine appliqué, 5 yds of fusible web (not required for hand appliqué)
- For batting, 64" x 82" piece



## Cutting Instructions

This quilt can be made with your favorite appliqué method. For hand appliqué, add a ¼" seam allowance around each template. For machine appliqué, trace the template shapes onto fusible web first and then apply the traced designs to the wrong side of the fabrics before cutting out the shapes.

### Suggested cutting layout for fat eighths



From EACH fat eighth cut:	(4) – 3 ½" x 5 ½" rectangles	
	(1) – A Flower	You should have 100 rectangles & 75 flowers.
	(1) – B Flower	
	(1) – C Flower	
From green gingham cut:	(12) – A Centers	Green centers go with the gray, yellow & pink flowers.
	(12) – B Centers	
	(12) – C Centers	
From yellow gingham cut:	(13) – A Centers	Yellow centers go with the blue, green & red flowers.
	(13) – B Centers	
	(13) – C Centers	
From white background cut:	(5) – 8" x 75 ½" LOF (Length of Fabric) strips	
From backing fabric cut:	(2) – 67" x WOF (Width of Fabric) pieces	
From binding fabric cut:	(7) – 2" OR 2 ½" x WOF strips	

## Quilt Assembly

1. To make a pieced strip, randomly choose (25) rectangles and sew them together to make a 5 ½" x 75 ½" strip. Make a total of (4) pieced strips.



Make 4 pieced strips

2. To prepare the flowers, appliqué a center to each flower, matching the sizes by the letters.
3. To make a flower panel, randomly pick (5) A , (5) B & (5) C flowers. Starting 2" from the top of a background strip, place the first flower. Use the photograph on the cover as a guideline. Position the flowers down the entire strip - **leaving at least ½" of space** from the sides for seam allowance - and pin in place.

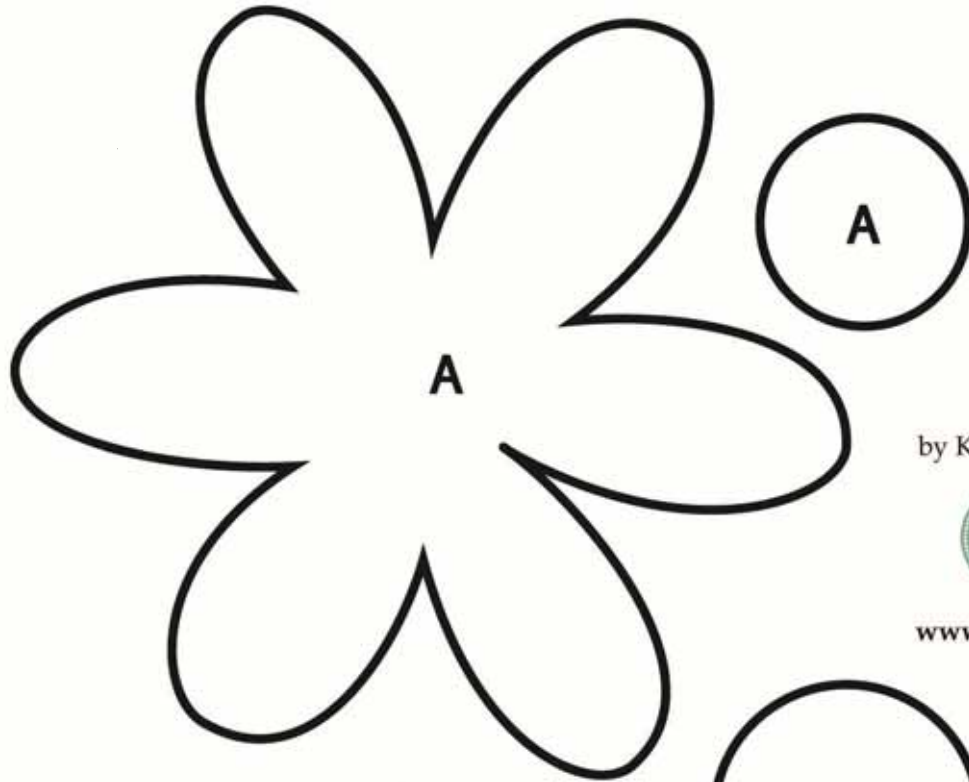
The flowers should look like they're scattered so leave uneven spaces between them and turn the flowers so they are oriented in different directions. There is no right or perfect way to position the flowers. Just play and have fun!

Appliqué the flowers using your preferred method. Make a total of (5) flower panels.

4. Sew the flower panels & pieced strips together, starting and ending with a flower panel.
5. To make the backing, sew the two pieces together to make a 67" x 84" piece.
6. Quilt as desired.
7. Bind, wash and enjoy all the calorie-free sweetness of your new favorite quilt!



# Templates



by Kristyne Czepuryk of



[www.prettybyhand.com](http://www.prettybyhand.com)

