

Tudor Bouquet

Featuring *Tudor Lane* fabrics by Denise Sheehan for
LECIEN



To view the Tudor Lane Collection and to
download Denise Sheehan's free pattern,
please visit www.lecien.co.jp/en/hobby/
and www.lecienusa.com

A Graceful Stitch
Quilt Designs by Denise Sheehan

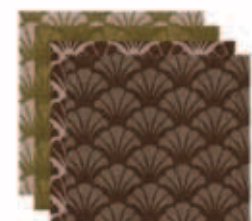
Tudor Bouquet

57" x 57" Quilt

Designed by Denise Sheehan; Quilted by Diana Johnson

Please read all instructions before starting. All seams are 1/4" unless otherwise stated.
Instructions assume 42" of useable fabric. Arrows denote pressing directions.

Scrappy Version Fabric Requirements



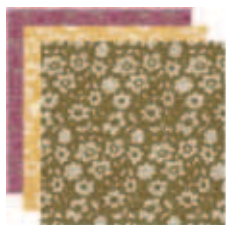
Caroline (for appliqué)
Fat eighth of each 30314-30
30314-60
30314-61
30314-70
30314-71



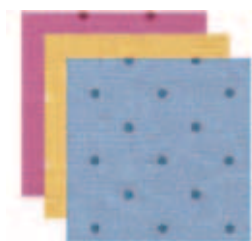
Diana (for appliqué)
Fat eighth of each 30313-20
30313-50
30313-70



Grace (for appliqué)
Fat eighth of each 30311-20
30311-51
30311-50
30311-71



Mary (for appliqué)
Fat eighth of each 30312-20
30312-50
30312-60



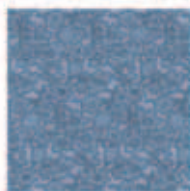
Kate (for appliqué)
Fat eighth of each 30315-21
30315-50
30315-70



Kate (for appliqué background)
5/8 yard 30315-10
1 yard 30315-11



Elizabeth (for center bouquets)
2 yards 30309-50



Mary (for bouquet corners)
1 1/8 yards 30312-70



Caroline (for inner border & binding)
3/4 yard 30312-70



Catherine (for outer border)
7/8 yard 30312-70

For Second Version



Caroline (for 1st border, binding & appliqué)
3/4 yard 30314-71
1 1/4 yards 30314-60



Kate (for appliqué background)
1 3/8 yards 30315-11



Elizabeth (for center bouquets)
1 1/4 yards 30309-70



Mary (for bouquet corners)
1 1/4 yards 30312-50



Catherine (for outer border)
7/8 yard 30310-70

Cutting Instructions

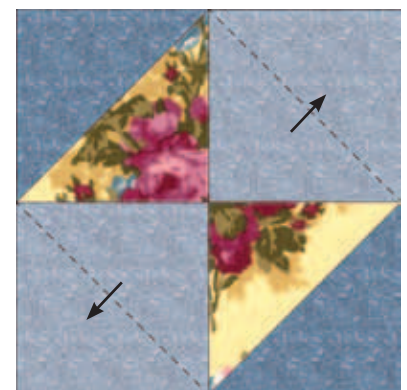
Center Bouquets	Cut (18) 8 ½” squares (I fussy cut my bouquets)
Bouquet Corners	Cut (8) 4 ½” strips; cut into (72) 4 ½” squares. Draw a diagonal line from corner to corner on wrong side of squares.
Appliqué Background	Cut (8) 8 ½” squares from 30315-10 and (10) 8 ½” squares from 30315-11 for scrappy version. For second version cut (18) 8 ½” squares from 30315-11.
Inner Border	Cut (5) 1” strips; piece together end to end.
Outer Border	Cut (6) 4 ½” strips; piece together end to end.
Binding	Cut (6) 2 ¼” strips; piece together end to end.

Piecing Instructions

Following diagram and with right sides together, line up (2) 4 ½” bouquet corner squares with an 8 ½” center bouquet square. Sew diagonally across corner squares from corner to corner. Press following arrows in diagram. Trim middle layer if desired.



Repeat with (2) more bouquet corner squares as shown in diagram.



Repeat for a total of (18) Bouquet Squares.



Applique Instructions

Using templates below, appliqué petal shapes onto 18 background squares. I prepped my shapes with the starch method and then machine appliquéd the shapes using a small buttonhole stitch and silk thread.

Quilt Assembly

Using the picture on the first page, assemble blocks into rows pressing seams towards appliqué blocks.

Stitch rows together pressing seams in the same direction.

Borders

Measure through the center of your quilt top from the top to the bottom and cut two inner border lengths to that measurement. Pin side borders in place, matching centers and easing if necessary, to the sides of your quilt top. Sew and press toward border.

Measure through the center of your quilt top from side to side and cut two inner border lengths to that measurement. Pin top and bottom borders in place, matching centers and easing if necessary, to the top and bottom of your quilt top. Sew and press toward border.

Repeat above procedure for outer borders.

Quilting:

Layer, baste and quilt as desired. Attach binding using your favorite method.



PO Box 23276
Pleasant Hill, CA 94523
(925) 939-2951
email: denise@agracefulstitch.com
www.agracefulstitch.com
blog: www.agracefulstitch.typepad.com

LECIEN
www.lecien.co.jp/en/hobby/

LECIEN U.S.A., Inc.
www.lecienusa.com