

Christmas Wishes

A Free Pattern Featuring Fabrics by Lynette Anderson Designs



Quilt Design and Instructions by Cate Tallman-Evans

Sample Made by Kay Harmon/Quilted by Darlene Szabo



Finished Quilt Size: 78" x 84"

To view more from Lynette Anderson designs, please visit
www.lynetteandersondesigns.com.au

OR

Lynette's Blog at

<http://www.lynetteandersondesigns.typepad.com/>

LECIEN

www.lecien.co.jp/en/hobby/

LECIEN U.S.A., Inc.

www.lecienusa.com
info@lecienusa.com

Christmas Wishes

Materials for the Quilt



30244-11
Cream Santas
⅜ yard



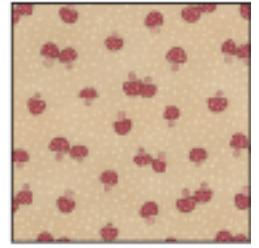
30244-30
Pink Santas
½ yard



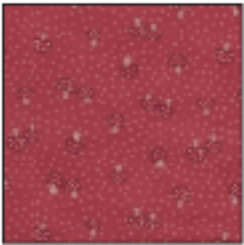
30244-80
Brown Santas
2 yards



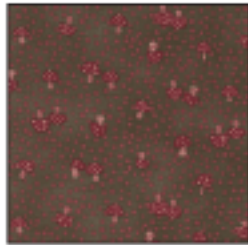
30244-90
Taupe Santas
½ yard



30245-11
Cream Mushrooms
⅜ yard



30245-30
Pink Mushrooms
½ yard



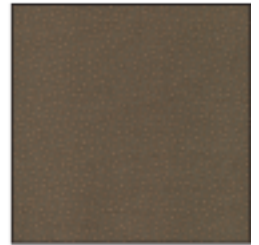
30245-80
Brown Mushrooms
½ yard



30246-10
Cream Dot
⅜ yard



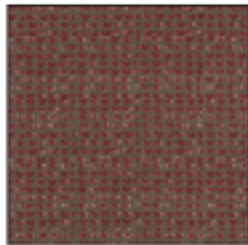
30246-30
Red Dot
1 ⅜ yards



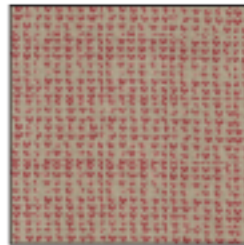
30246-80
Brown Dot
¼ yard



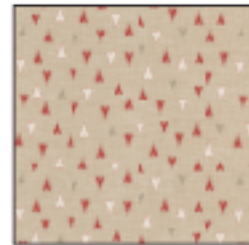
30246-90
Taupe Dot
½ yard



30247-80
Brown Stacked Hearts
⅜ yard



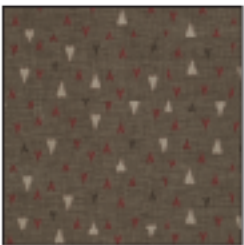
30247-90
Taupe Stacked Hearts
½ yard



30248-11
Cream Hearts
⅜ yard



30248-30
Red Hearts
1 ⅜ yards



30248-80
Brown Hearts
½ yard



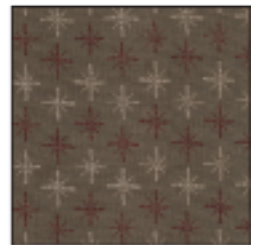
30248-90
Taupe Hearts
½ yard



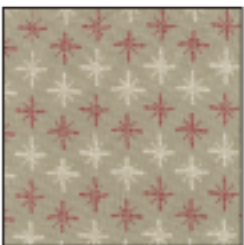
30249-10
Cream Snowflakes
⅜ yard



30249-30
Red Snowflakes
¾ yard



30249-80
Brown Snowflakes
½ yard



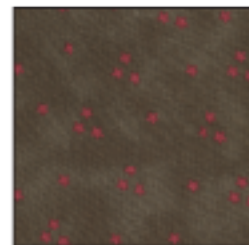
30249-90
Taupe Snowflakes
⅜ yard



30250-10
Cream Stars
1 ⅜ yards



30250-30
Red Stars
½ yard



30250-80
Brown Stars
½ yard



30250-90
Taupe Stars
½ yard

Christmas Wishes

Additional Materials

Template plastic

All supplies for your chosen method of appliqué, note that appliqué templates do not include seam allowances.

Black embroidery floss

Scrap of black fabric or 1/8" wide fusible black bias strip for reindeer legs.

Small black button for house door handle.

Cutting Instructions

Note: All strips are cut across the width of the fabric from selvage edge to selvage edge. Reserve all uncut yardage for appliqués.

From **EACH** of the cream santas, cream mushrooms, cream hearts, and cream snowflakes, cut:

(1) 8 1/2" strip. Recut into (2) 8 1/2" x 8 1/2" squares.

From the cream dot, cut:

(1) 8 1/2" strip. Recut into (2) 8 1/2" x 8 1/2" squares and (1) 8 1/2" x 10 1/2" piece.

From the cream stars, cut:

(1) 36 1/2" strip. Recut into (1) 30 1/2" wide x 36 1/2" high panel for the appliqué background. From the unused portion of this strip, cut (2) 8 1/2" x 8 1/2" squares, (4) 2 1/2" x 4 1/2" pieces, (1) 2 1/2" x 2 1/2" square and (1) 2" x 2" square.

From **EACH** of the pink santas, pink mushrooms, and red stars, cut:

(2) 2 1/2" strips. Recut into (32) 2 1/2" x 2 1/2" squares.

From the red dot, cut:

(2) 2 1/2" strips. Recut into (32) 2 1/2" x 2 1/2" squares.

(9) 2 1/4" strips for the binding.

(1) 1" strip. Recut into (4) 1" x 4 1/2" and (4) 1" x 2 1/2" pieces.

From the red hearts, cut:

(9) 2 1/2" strips. Set aside (7) strips for the inner border. Recut (2) strips into (32) 2 1/2" x 2 1/2" squares.

From the red snowflakes, cut:

(1) 8 1/2" strip. Recut into (4) 8 1/2" x 8 1/2" squares.

(2) 2 1/2" strips. Recut into (32) 2 1/2" x 2 1/2" squares.

From the brown santas, cut:

(7) 8 1/2" strips for the outer border.

(1) 2 1/2" strip. Recut into (16) 2 1/2" x 2 1/2" squares.

From **EACH** of the brown mushrooms, brown dot, brown stacked hearts, brown hearts, brown snowflakes, and brown stars, cut:

(1) 2 1/2" strip. Recut into (16) 2 1/2" x 2 1/2" squares.

From **EACH** of the taupe santas, taupe dot, taupe stacked hearts, and taupe stars, cut:

(1) 8 1/2" strip. Recut into (2) 8 1/2" x 8 1/2" squares.

(1) 2 1/2" strip. Recut into (16) 2 1/2" x 2 1/2" squares.

From the taupe hearts, cut:

(1) 8 1/2" strip. Recut into (2) 8 1/2" x 8 1/2" squares and (1) 8 1/2" x 10 1/2" piece.

(1) 2 1/2" strip. Recut into (16) 2 1/2" x 2 1/2" squares.

From the taupe snowflakes, cut:

(1) 14 1/4" strip. Recut into (1) 14" wide x 14 1/4" high piece for the house and (2) 8 1/2" x 8 1/2" squares.

(1) 2 1/2" strip. Recut into (16) 2 1/2" x 2 1/2" squares.

Appliqué

1. Using the paper patterns provided and template plastic, make templates for each shape.

2. Prepare the number of motifs listed on each paper pattern as required for your chosen method of appliqué. Please note that the templates are not reversed and do not have seam allowances.

Prepare the house appliqué unit.

3. All rectangular patches for the house, cut in the previous section or below, include 1/4" seam allowances in both directions. If your appliqué method does not require seam allowances, you will need to trim all of these patches 1/2" in both directions before using them in your project.

4. Using the quilt pictured on the cover as a guide, appliqué the 2 1/2" x 4 1/2" cream star pieces onto the right side of the 14" x 14 1/4" taupe snowflakes piece to create the "glass" for the house windows. Appliqué the 1" x 4 1/2" and the 1" x 2 1/2" red dot pieces on top of each cream star piece for the window sashing. Cut (4) 2 5/8" x 4 5/8" brown stars pieces. Cut the center of each piece and reverse appliqué one piece on top of each window to complete the window frames.

5. Cut a 3 1/4" x 6" red snowflakes piece for the door and appliqué this piece to the right side of the house unit using the quilt pictured on the cover as a guide to placement. Appliqué the 2" x 2" cream square to the right side side of the door. Cut a 2 1/8" x 2 1/8" brown stars piece and place this on top of the cream square. Using the quilt pictured as a guide, cut the brown piece and reverse appliqué to make the window sashing and framing. Cut a 4 1/4" x 6 1/2" brown stars piece for the door frame. Place this on piece on top of the door, trim, and reverse appliqué to complete the door frame.

7. Appliqué the house star to the house unit.

Prepare the roof appliqué unit.

8. Using the quilt pictured on the cover as a guide, appliqué the 2 1/2" x 2 1/2" cream square to the right side side of the dormer triangle. Cut a 2 5/8" x 2 5/8" brown stars piece and place this on top of the cream square. Repeating the procedure from the door window, cut the brown piece and reverse appliqué to make the window sashing and framing.

9. Using the quilt pictured on the cover as a guide to placement, appliqué the dormer triangle to the roof.

Complete the center panel.

10. Again using the quilt pictured on the cover as a guide, arrange the house unit, roof unit, sky stars, reindeer body, and reindeer head on the right side of the large cream stars panel. When you are pleased with the arrangement, appliqué the house, roof, and stars to the background panel. Using the scrap of solid black fabric, make (4) 1/8" wide x 3 3/4" long bias strips or use 1/8" wide prepared black bias strips. Use these strips for the reindeer's legs and position them on the cream background panel. Appliqué the reindeer's body, head, and legs to the panel. Position and appliqué the reindeer's hooves, collar, and heart. Embroider the reindeer's antlers, eyes, nose and mouth to complete the center panel.

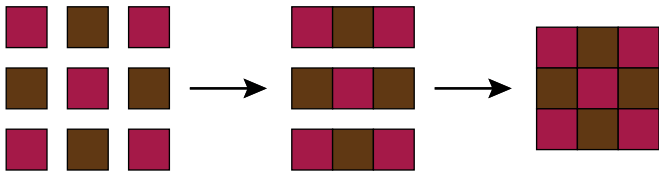
Christmas Wishes

Sewing Instructions

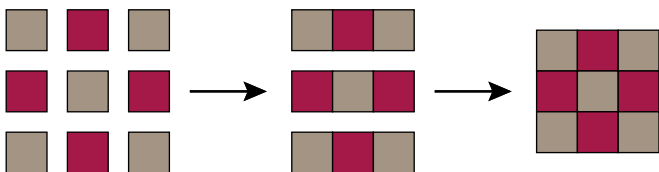
Note: All seams are sewn using 1/4" seam allowance with right sides held together and raw edges even.

Add the first border.

1. Arrange (5) 2 1/2" red squares and (4) 2 1/2" brown squares into (3) rows with (3) units in each row. Stitch the squares into rows and sew the rows together to complete (1) 6 1/2" x 6 1/2" brown nine-patch block. Repeat to make a total of (13) blocks using the quilt pictured on the cover as a guide to fabric placement or using your own combinations of 2 1/2" brown, red and pink squares.



2. Arrange (5) 2 1/2" taupe squares and (4) 2 1/2" red squares into (3) rows with (3) units in each row. Stitch the squares into rows and sew the rows together to complete (1) 6 1/2" x 6 1/2" taupe nine-patch block. Repeat to make a total of (13) blocks using the quilt pictured on the cover as a guide to fabric placement or using your own combinations of 2 1/2" taupe, red and pink squares.



3. Stitch together (3) brown and (3) taupe nine-patch blocks to make a 6 1/2" x 36 1/2" pieced border, alternating the brown and taupe blocks. Sew these borders to the left and right sides of the center panel making sure the ends with a taupe nine-patch are placed toward the top of the center panel.

4. Stitch together (4) brown and (3) taupe nine-patch blocks to make a 6 1/2" x 42 1/2" pieced border, alternating the brown and taupe blocks. Sew this border to the top of the center panel.

5. Stitch together (3) brown and (4) taupe nine-patch blocks to make a 6 1/2" x 42 1/2" pieced border, alternating the brown and taupe blocks. Sew this border to the bottom of the center panel.

Add the second border.

1. Using the quilt pictured on the cover as a guide to fabric placement, appliqué each of the (16) red and pink block stars to the right side of an 8 1/2" cream or taupe square.

2. Again using the quilt pictured on the cover as a guide for fabric placement, appliqué (1) red or pink heart and (1) brown heart to the right side of an 8 1/2" taupe square. Repeat to make a total of (8) squares. Repeat this procedure to appliqué (2) red or pink hearts and (1) brown heart to the right side of each 8 1/2" x 10 1/2" cream and taupe piece.

Add the second border (continued).

3. Stitch together (2) taupe star and (2) cream star blocks to make an 8 1/2" x 32 1/2" strip, alternating the two types of units and noting the orientation of the star motifs. Stitch heart blocks to the top and bottom of this unit keeping the pattern of alternating block backgrounds and noting the orientation of the heart motifs. Repeat to make a second 8 1/2" x 48 1/2" border unit. Sew these border units to the left and right sides of the quilt top, noting orientation.

4. Stitch together (4) cream star blocks, (2) taupe heart blocks and (1) taupe triple heart block to make an 8 1/2" x 58 1/2" strip, alternating the star and heart blocks and placing the triple heart block in the center of the strip. Sew this border unit to the top of the quilt top.

5. Stitch together (4) taupe star blocks, (2) cream heart blocks and (1) cream triple heart block to make an 8 1/2" x 58 1/2" strip, alternating the star and heart blocks and placing the triple heart block in the center of the strip. Sew this border unit to the bottom of the quilt top.

Add the third border.

Trim the selvages from the 2 1/2" brown star strips and sew the strips together end to end to make a long 2 1/2" strip. From this long strip, cut (2) 64 1/2" and (2) 62 1/2" lengths. Sew the longer pieces to the left and right sides of the quilt top. Sew the shorter pieces to the top and the bottom.

Add the fourth border.

1. Trim the selvages from the 8 1/2" brown santas strips and sew the strips together end to end to make a long 8 1/2" strip. From this long strip, cut (2) 68 1/2" and (2) 62 1/2" lengths. Sew the longer pieces to the left and right sides of the quilt top.

2. Appliqué (1) taupe and (1) cream heart to the right side of an 8 1/2" red snowflakes square. Repeat to make a total of (4) blocks using the quilt pictured on the cover as a guide to correct fabric placement in each block.

3. Sew a red heart appliqué block to each end of a 62 1/2" brown santas border strip, noting orientation of the heart motifs. Repeat to make a second unit. Stitch these pieced borders to the top and bottom to complete the quilt top.

Finishing

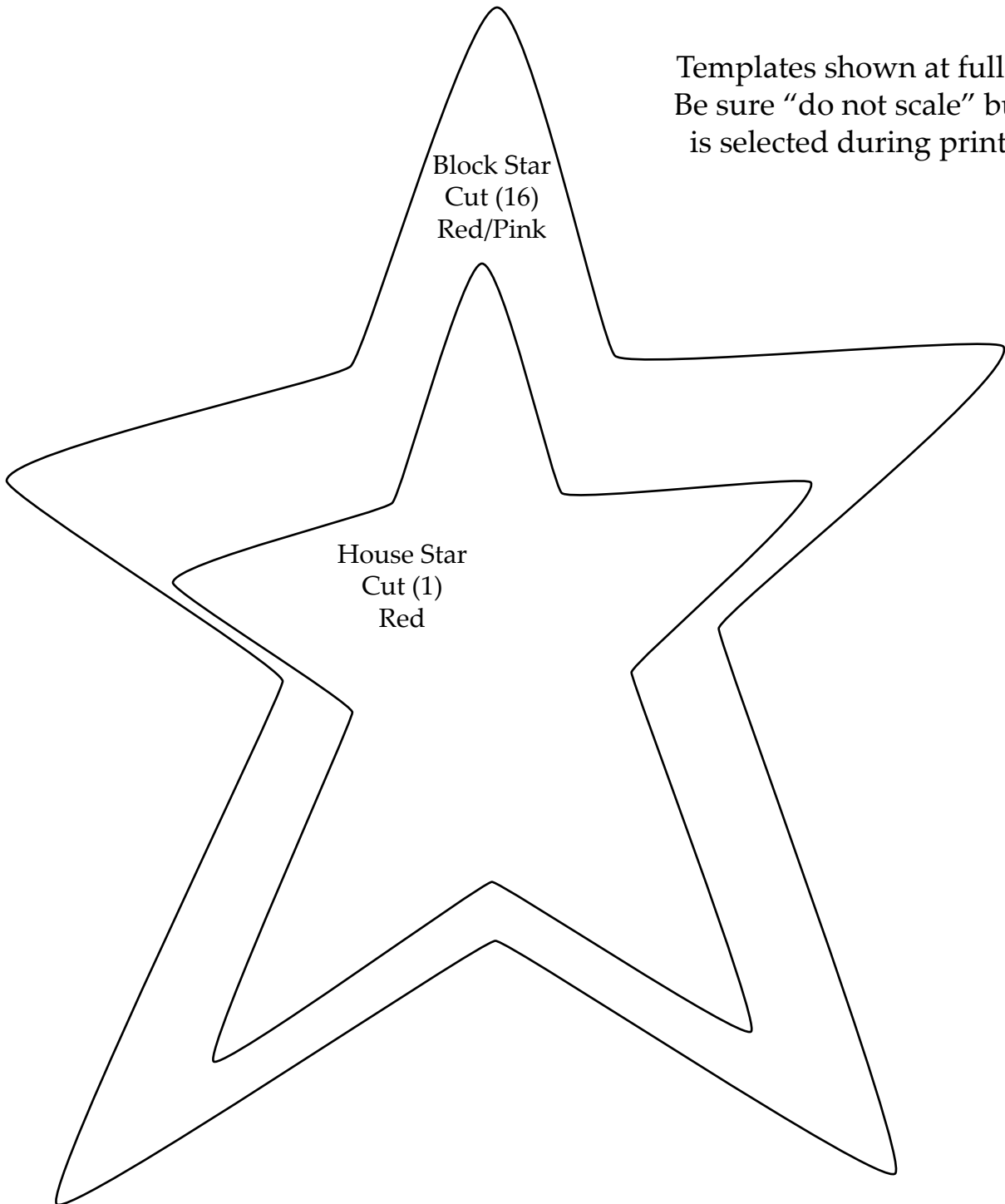
1. Layer the completed quilt top with batting and backing and quilt as desired.

2. Trim the batting and backing even with the outer edge of the quilt top and bind the finished quilt using the 2 1/4" red dot strips.

3. Sew the small black button to the door of the house for the door handle.

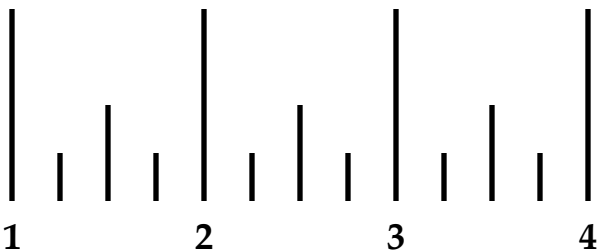
Christmas Wishes
Template Page 1

Templates shown at full size.
Be sure "do not scale" button
is selected during printing.



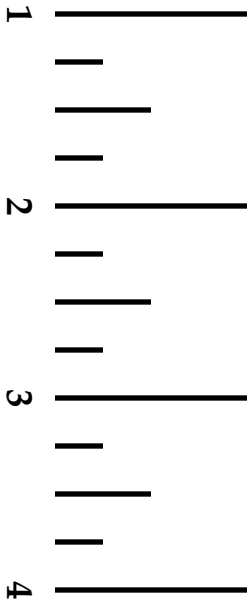
Block Star
Cut (16)
Red/Pink

House Star
Cut (1)
Red



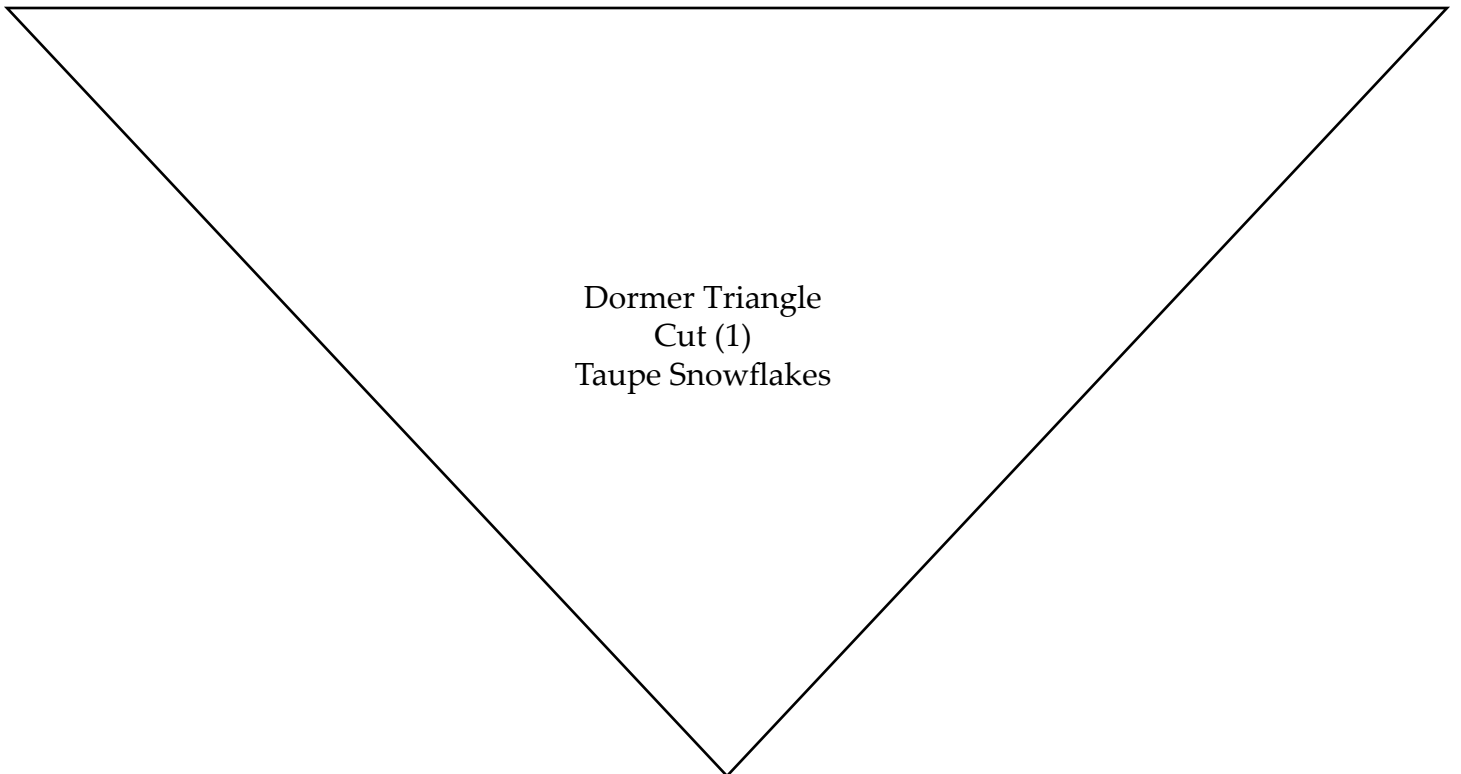
Christmas Wishes
Template Page 2

Templates shown at full size.
Be sure "do not scale" button
is selected during printing.



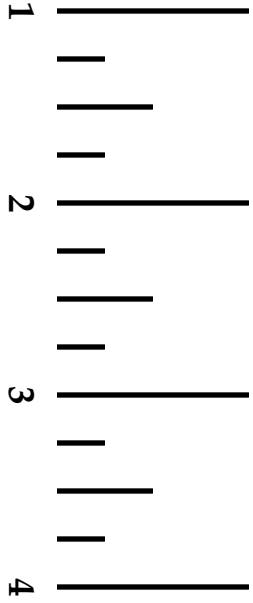
Large Sky Star
Top Section
Combine With
Large Sky Star
Bottom Section
on Template Page 3
and
Cut (1)
Red

Dormer Triangle
Cut (1)
Taupe Snowflakes

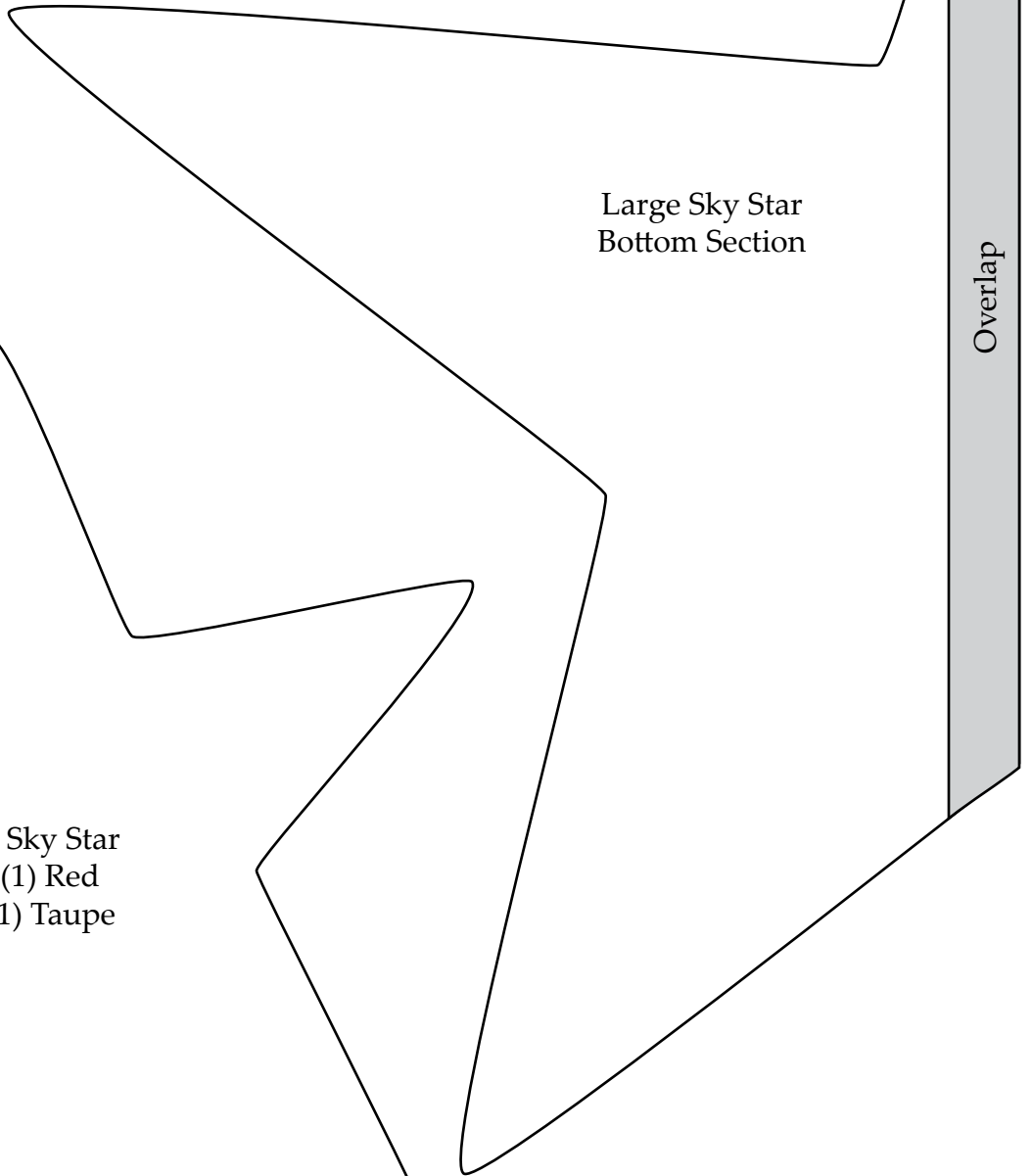


Christmas Wishes
Template Page 3

Templates shown at full size.
Be sure "do not scale" button
is selected during printing.



Small Sky Star
Cut (1) Red
and (1) Taupe

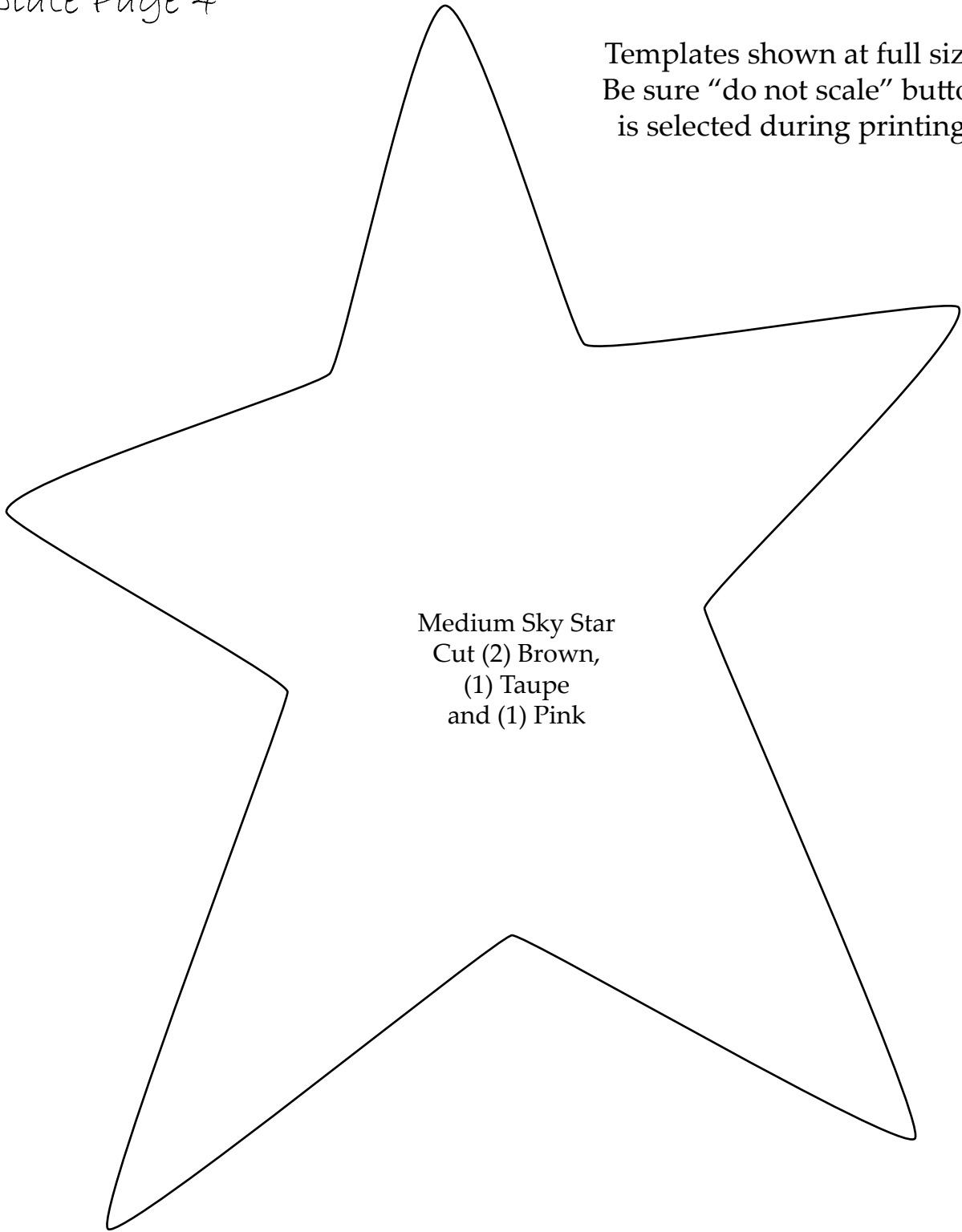


Large Sky Star
Bottom Section

Overlap

Christmas Wishes
Template Page 4

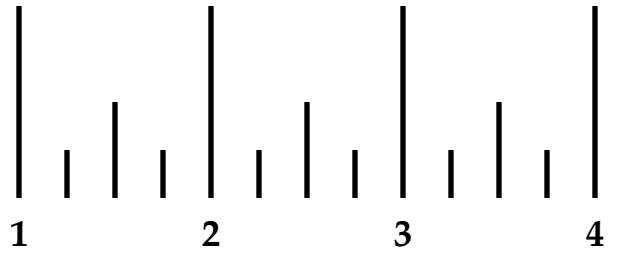
Templates shown at full size.
Be sure "do not scale" button
is selected during printing.



Medium Sky Star
Cut (2) Brown,
(1) Taupe
and (1) Pink



Christmas Wishes
Template Page 5



Block Heart
Cut (12) Red/Pink,
(10) Brown,
(4) Cream
and (4) Taupe

Templates shown at full size.
Be sure "do not scale" button
is selected during printing.

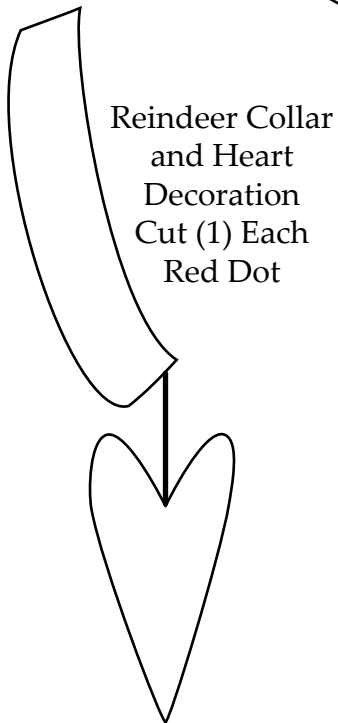
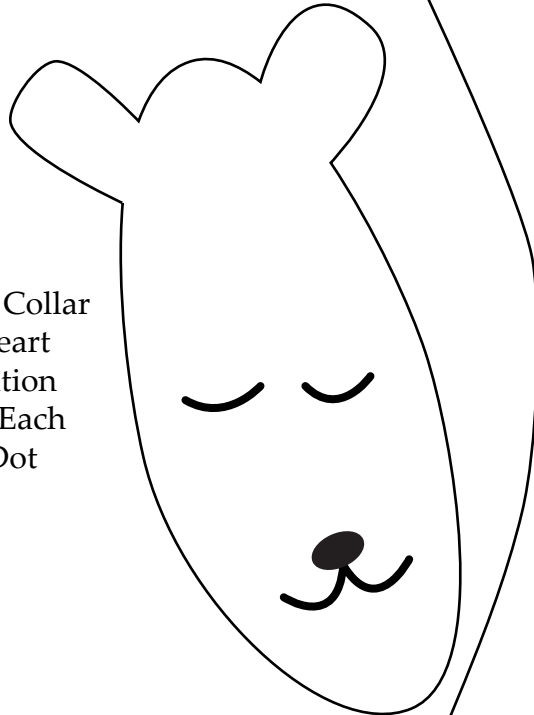
Roof
(1/2 Section)

Fold Line

Christmas Wishes
Template Page 6

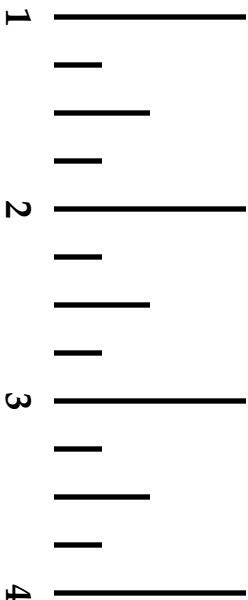
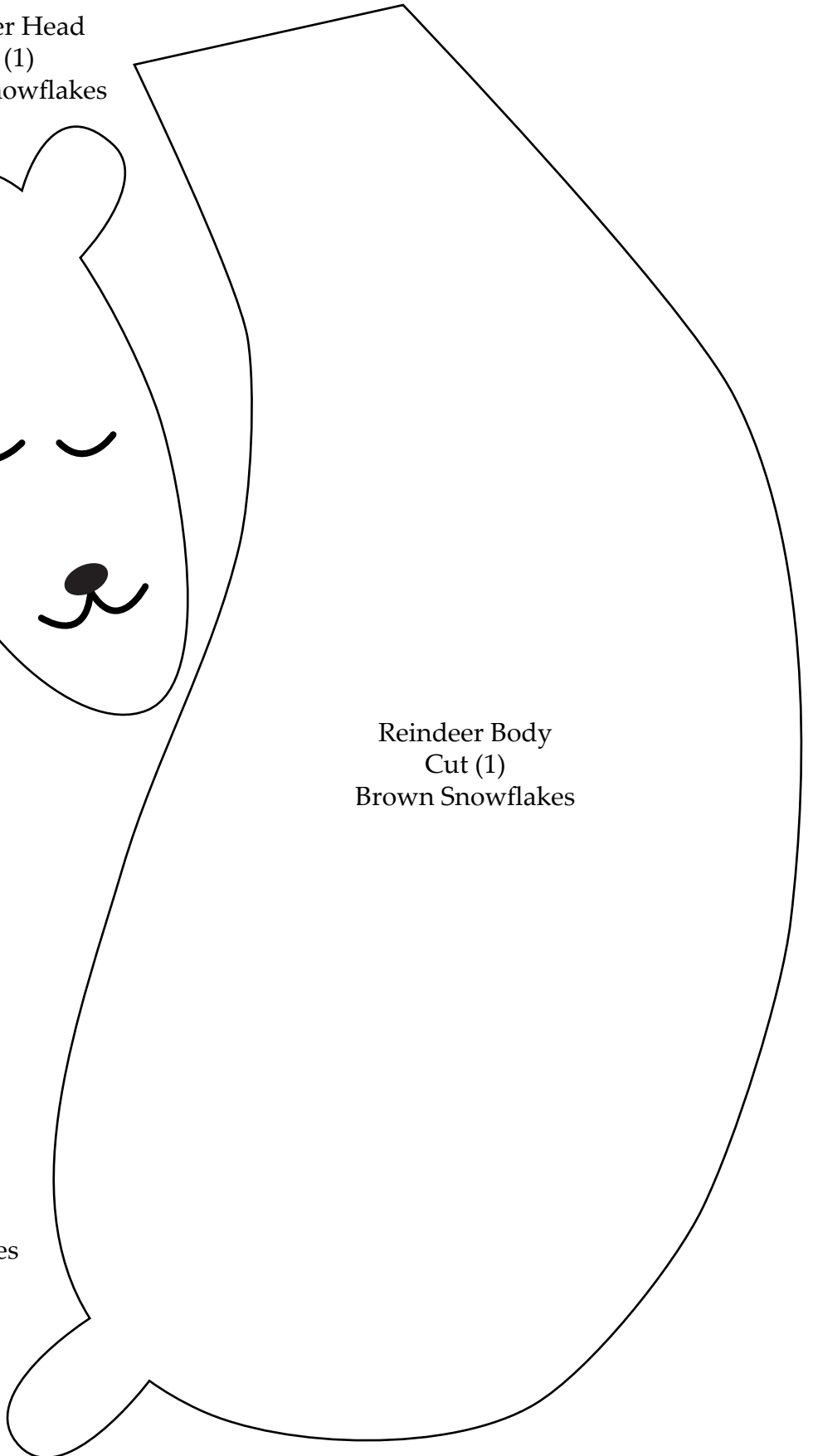
Templates shown at full size.
Be sure "do not scale" button
is selected during printing.

Reindeer Head
Cut (1)
Brown Snowflakes



Reindeer Collar
and Heart
Decoration
Cut (1) Each
Red Dot

Reindeer Body
Cut (1)
Brown Snowflakes



Reindeer Hooves
Cut (4)
Brown Dot

