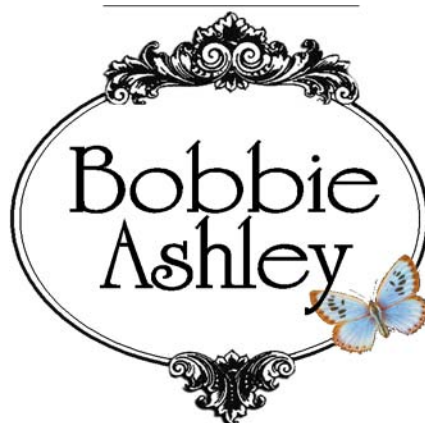




# Blueberry Hill

64 X 64



#239

Classic & Elegant  
Quilt Designs

[www.bobbieashley.com](http://www.bobbieashley.com)  
[vbd@satx.rr.com](mailto:vbd@satx.rr.com)



## Garden Sketchbook by THIMBLEBERRIES®



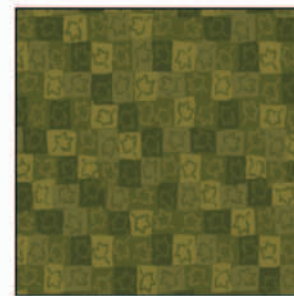
0826-01  
Fabric B  
3/4 Yard



0823-02  
Fabric D  
3/8 Yard



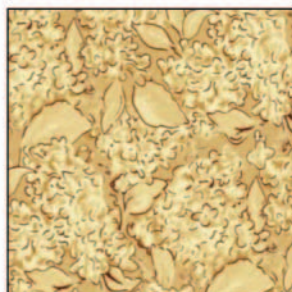
0821-04  
Fabric E  
3/4 Yard



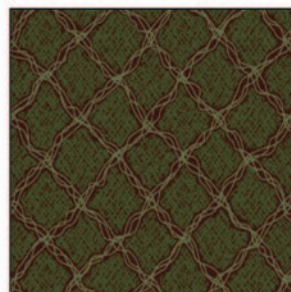
0825-01  
Fabric G  
3/8 Yard



0821-05  
Fabric H  
3/4 Yard



0822-03  
Backing  
4 Yards

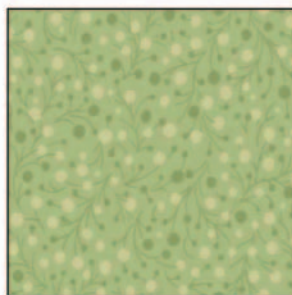


0826-03  
Fabric N  
1/4 Yard

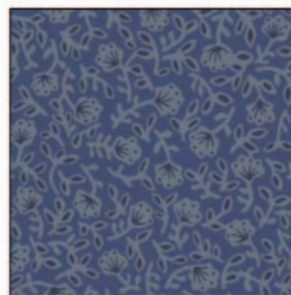
## Shades Apart by RJR Fabrics



0806-02  
Fabric A  
1 Yard



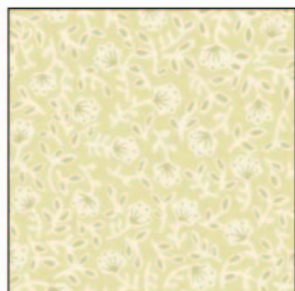
0808-05  
Fabric C  
3/8 Yard



0811-03  
Fabric F  
3/4 Yard



0810-03  
Fabric I & Binding  
1.5 Yard



0811-01  
Fabric J  
3/4 Yard



0819-01  
Fabric K  
3/8 Yard



0806-01  
Fabric L  
2.25 Yard

## General Instructions

**\*\*Please read all directions completely before beginning\*\***

Welcome to Blueberry Hill. We are so excited you have decided to stitch with us. On this quilting journey we will be exploring simple appliqué leaves and berries. Blocks adorned with one easy embroidery stitch, creating beautiful curved stems and flourishes.

I've had the thrill of working with RJR fabrics and two of their Thimbleberries lines, *Garden Sketchbook & Shades Apart*.

We have included the layout and cutting directions for the background, borders and entire quilt. Assemble the quilt when all of the appliqué and embroidery is finished.

Both spray starch and needle turn appliqué are fabulous methods. The pattern will work great with any preferred method you choose. The design needs no reversing for fusible appliqué.

Cut your appliqué blocks a bit bigger, if you have a tendency to appliqué with a tighter tension. Trim to fit to size after your appliqué is completed. If you are a beginner, a beginner appliqué class or good "how-to" book will help get you started.

Be as accurate as you can when cutting your fabric. The entire pattern uses a 1/4" inch seam allowance throughout.

**Embroidery:** All of the embroidery is worked with 4 strands of thread. There is only one embroidery stitch to learn, the backstitch.

A bit of practice on a piece of extra cloth, before you work on your blocks, will get the best results.

Transfer all embroidery lines to your fabric before starting the appliqué. Complete the appliqué before starting the embroidery. It is easier to add another stitch if needed, instead of lining up your appliqué next to the stitching.

A window, some tape and sunny day can be used to transfer the appliqué and embroidery pattern to your fabric. Transfer your details with a fine point erasable marker or fabric pencil.

We are not pulling weeds, so be sure to not pull the thread too tight or it will create puckers in your fabric and distort the block.

Happy stitching!

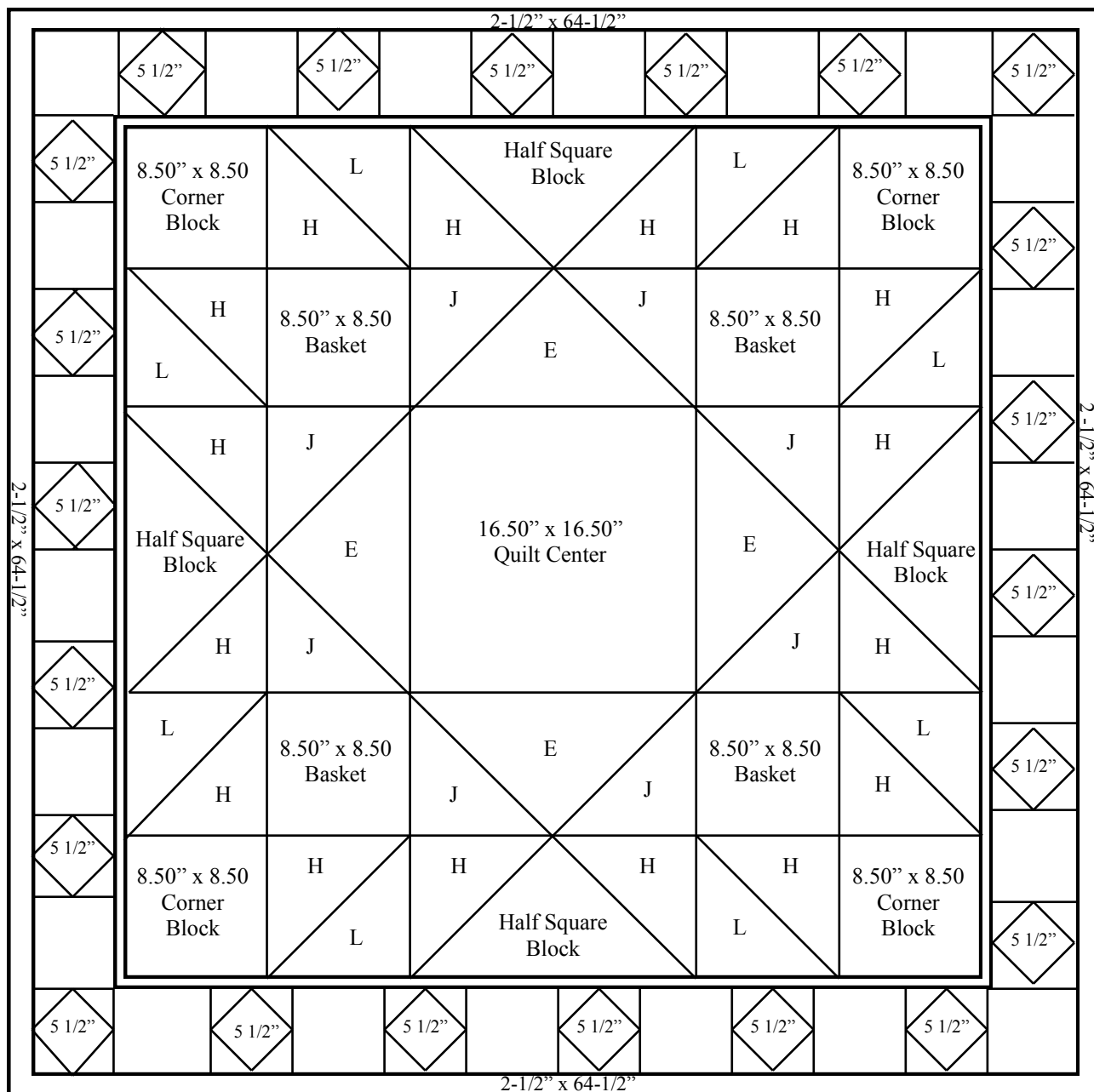
## Blueberry Hill Supply List

1. Matching sewing thread
2. Sewing machine
3. Freezer paper-applicable to freezer paper appliqué method
4. Scissors, fabric and paper
5. Pen
6. Pins
7. Needles
8. Seam ripper
9. Glue stick
10. Washable pencil or pen
11. Embroidery thread, Precencia color #5156-6 skeins
12. Embroidery hoop
13. Embroidery needles
14. Ruler
15. Cutting mat
16. Rotary cutter



# Blueberry Hill

Cutting sizes shown



\*\*Small inner border is cut 1.50'' x 52.5''



## Appliqué Fabric

### Cutting Instructions

#### General guidelines

- Prepare the berries and leaves using your favorite method of appliqué. Before you appliqué the leaves and berries, place pattern right side up over a light box or window. Tracing all of the embroidery lines and placement lines for each berry and leaf, using a fabric pencil or water washable marker.
- Complete the embroidery after your appliqué. Using 4 strands of Presencia stranded cotton thread, color#5156 in a back-stitch.

#### Block Center

##### Fabric L (Background)

- Cut **one** 16-1/2" x 16-1/2" square.

##### Fabric D (Center Ring)

- Cut **one** 6-1/2" x 6-1/2" square for the center ring.

##### Fabric F (Dark berries)

- Cut **one**, 1-1/2" x 44" long strip, transfer circle pattern and create 9 berries.

##### Fabric A (Lt. berries)

- Cut **one**, 1-1/2" x 44" long strip, create 9 berries.

##### Leaves

- Cut **three** leaves from fabric C.
- Cut **four** leaves from fabric K.
- Cut **two** leaves from fabric G.

#### Half Square Block Appliqué

##### Fabric L (Background)

- Cut **one**, 17-3/4" x 17-3/4" square. Cut diagonally from corner to corner, **twice**, creating 4 triangles.

##### Fabric H (Side triangles)

- Cut **one**, 9-1/8" x 44" long strip. Sub-cut, four, 9-1/8" x 9-1/8" squares, cut each square once diagonally, creating eight 1/2 triangles.
- Attach the long side of triangle (H) to the short side of background triangle (L). Create four total sets.
- Complete your appliqué and trim all four block sets to **8-1/2 wide by 16-1/2 long**.



##### Fabric F (Dark berries)

- Cut **one**, 1-1/2" x 44" long strip, transfer circle pattern and create 12 berries.

##### Fabric A (Lt. berries)

- Cut **one**, 1-1/2" x 44" long strip, create 8 berries.

##### Leaves

- Cut **two** leaves from fabric C.
- Cut **four** leaves from fabric K.
- Cut **two** leaves from fabric G.

#### Square corner Blocks

##### Fabric L (Background)

- Cut one, 8-1/2" x 44" strip, sub-cut into **four** 8-1/2" x 8-1/2" wide blocks.

##### Fabric F (Dark berries)

- Cut **one**, 1-1/2" x 44" long strip, transfer circle pattern and create 24 berries.

##### Fabric A (Lt. berries)

- Cut **one**, 1-1/2" x 44" long strip, create 24 berries.

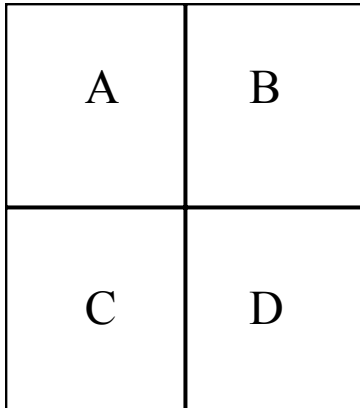
##### Leaves

- Cut **four** leaves from fabric C.
- Cut **eight** leaves from fabric K.
- Cut **four** leaves from fabric G.

# Appliqué

## Block Center Appliqué

1. Complete the embroidery after your appliqué.
2. Make one.

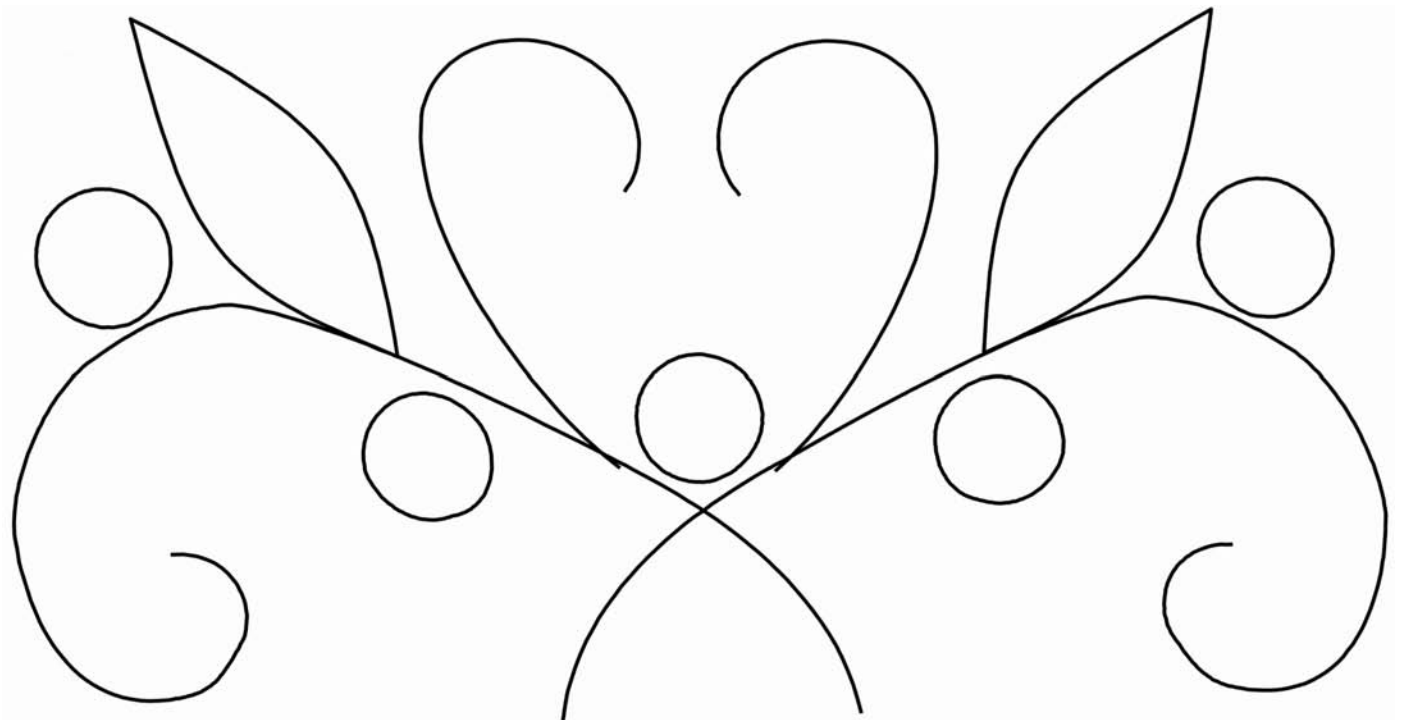


Pattern placement diagram



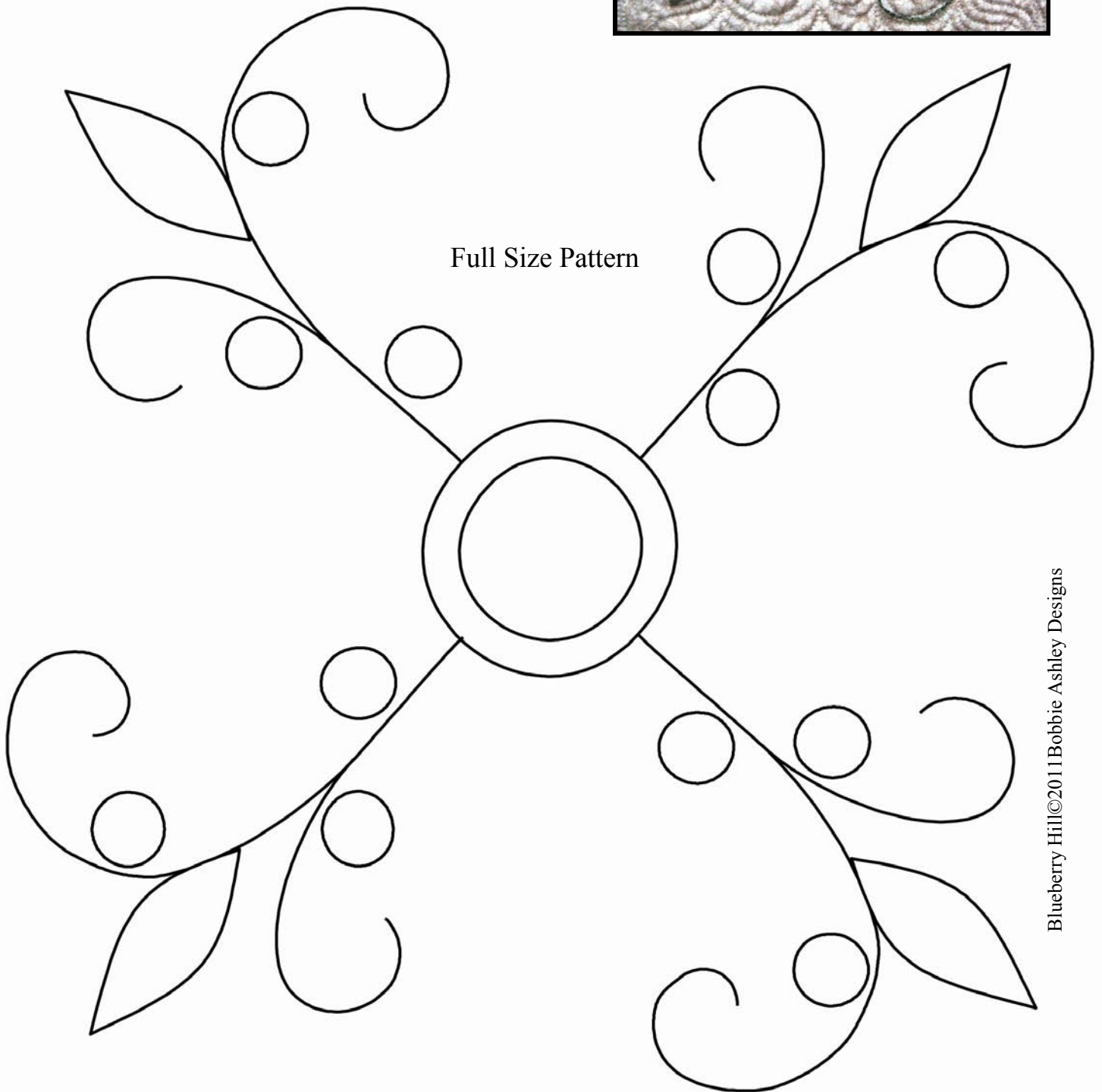
## Half Triangle Appliqué

1. Complete the embroidery after your appliqué.
2. Make four.



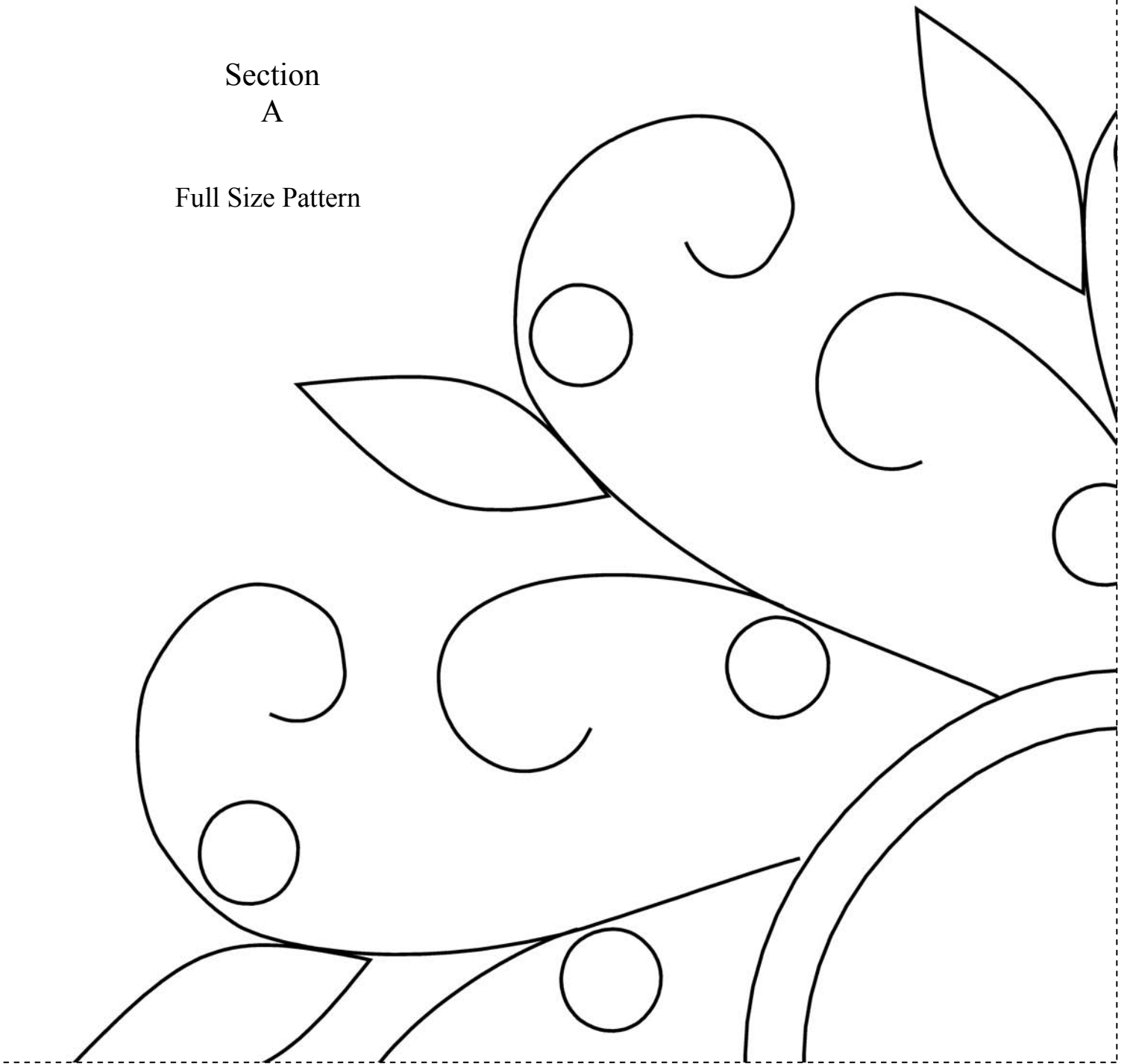
## Corner Block Appliqué

1. Complete the embroidery after your appliqué.
2. Make four.



Section  
A

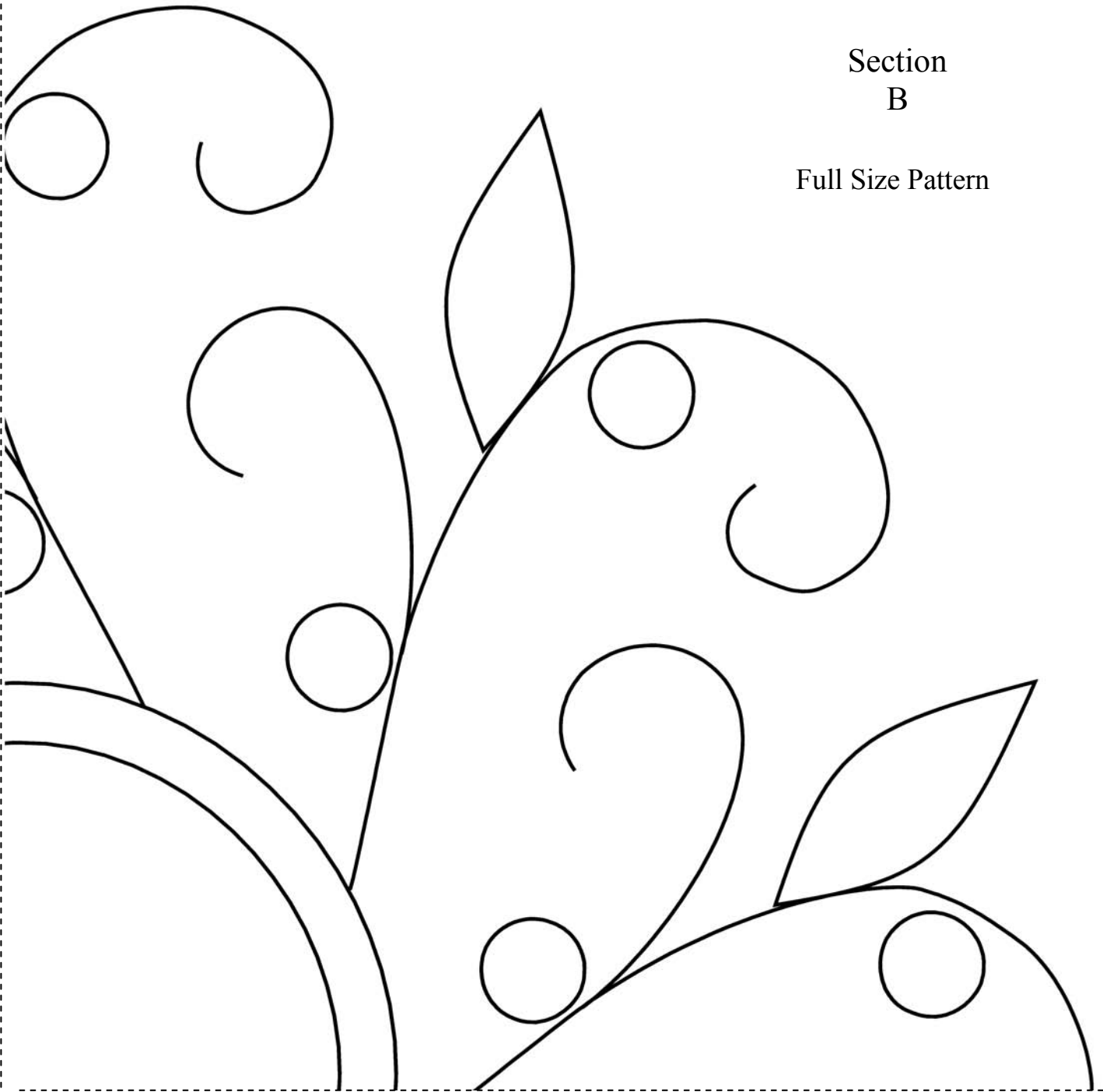
Full Size Pattern

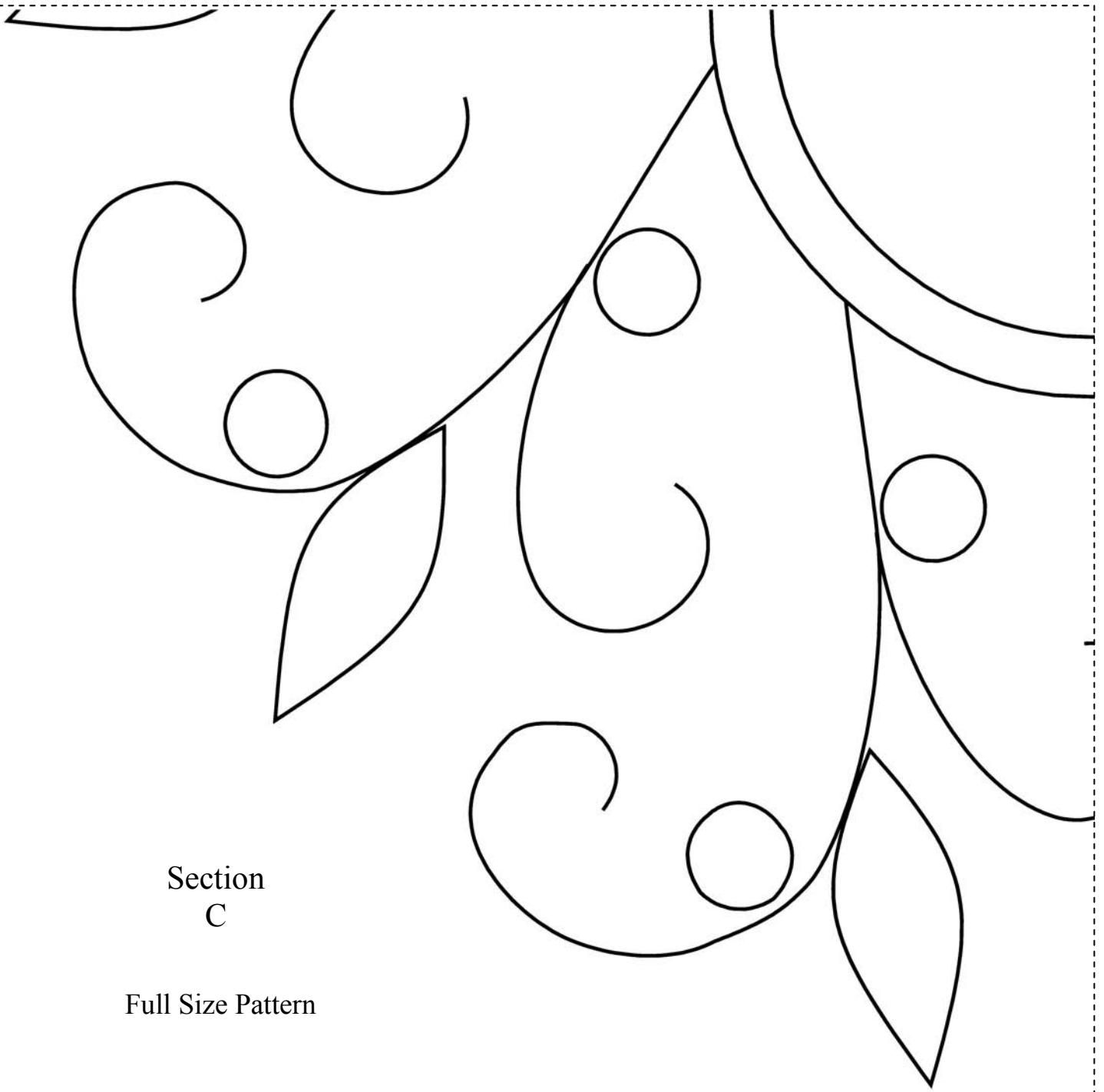




Section  
B

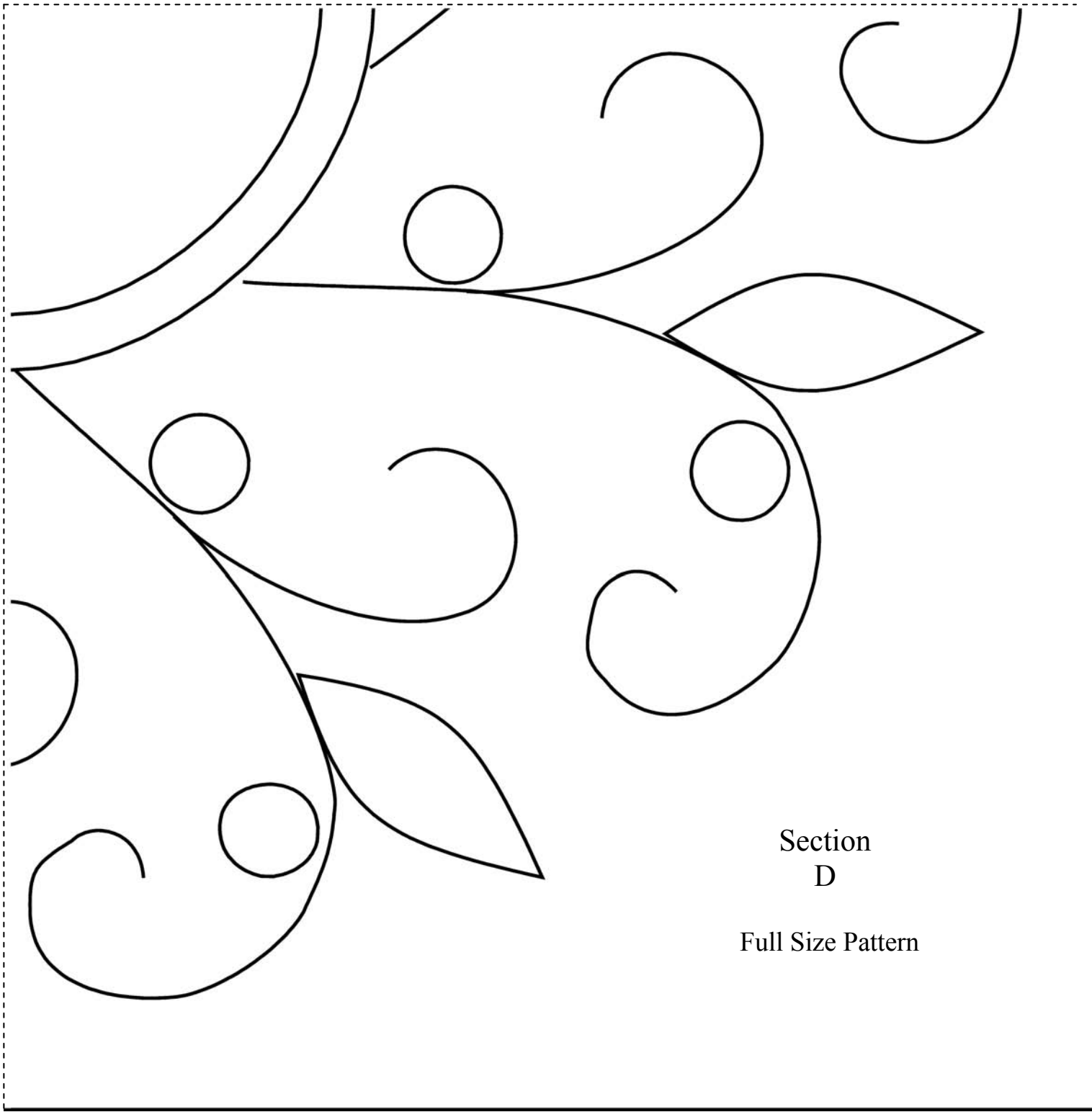
Full Size Pattern





Section  
C

Full Size Pattern



Section  
D

Full Size Pattern





## Basket Construction

These instructions for your basket are a combination of rotary cutting instructions and templates. Be sure to pin fabric together as you piece the units together. Using these techniques will ensure a perfect basket every time!

These cutting directions will complete four baskets.

### Fabric L (background)

- Cut **one** 6-1/8 x 44 inch strip. Sub-cut **two** 6-1/8 x 6-1/8 inch squares, cut diagonally, creating **four** triangles.
- Using template G, trace, cut and remove the triangle points.
- Cut **two** 3-1/2 x 3-1/2 inch squares, cut diagonally, creating **four** triangles.
- Using template D, trace, cut and remove the triangle points.
- Cut **four**, 1-7/8 x 1-7/8 squares.
- Cut **eight**, 5-7/8 x 1-7/8 wide rectangles.
- Cut **one**, 2-1/8 x 44 inch long strip, sub-cut **sixteen**, 2-1/8 x 2-1/8 inch squares, cut diagonally, creating 32 triangles.
- Using template B, trace, cut and remove triangle points.

### Fabric G

- Cut **four** 1-7/8 x 1-7/8 inch squares.

### Fabric C

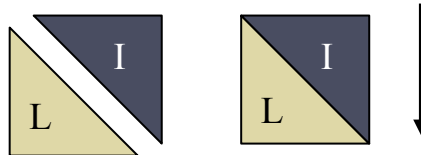
- Cut **one** 3-3/8 x 44 inch long strip, sub-cut **two** 3-3/8 x 3-3/8 inch squares, cut diagonally, creating **four** triangles.

### Fabric I

- Cut **one**, 1-7/8 x 44 inch long strip, sub-cut **eight**, 1-7/8 x 4-7/8 inch strips.
- Using **template E**, trace **four** rectangles, cut and remove excess fabric.
- Repeat previous step, using **template F**, trace **four** rectangles, cut and remove excess fabric.
- Cut **one**, 2-1/8 x 44 inch long strip, sub-cut **twenty**, 2-1/8 x 2-1/8 inch squares, cut diagonally, creating 40 triangles.

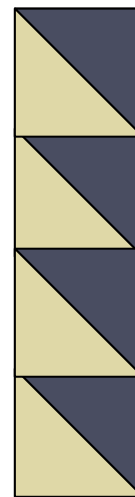
## Basket sewing instructions

1. Combine **32** triangles from **fabric L** and **fabric I**, creating **32** squares. Press open seams after each step. Chain piecing works great for this step.



2. Join four sets of triangle/squares together. Create four strip sets.

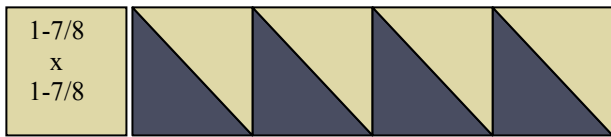
### Strip set #1.



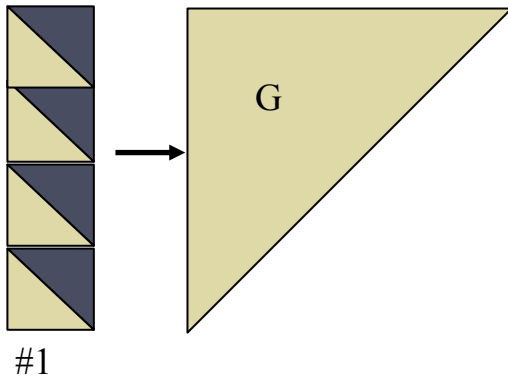
3. Join 4 sets of **reverse** triangle/squares together. Create four strip sets. **Strip set #2.**

## Basket Construction Cont.

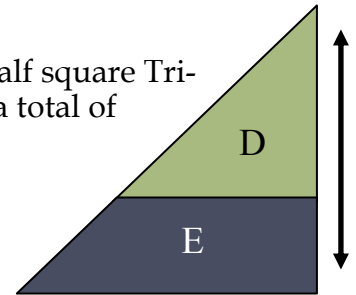
4. Add one background,  $1\frac{7}{8} \times 1\frac{7}{8}$  square to the left hand side of **strip set #2**, repeat for a total of four.
7. Sew together,  $1\frac{7}{8}$  inch green square (A) to piece (F). Repeat for a total of four.



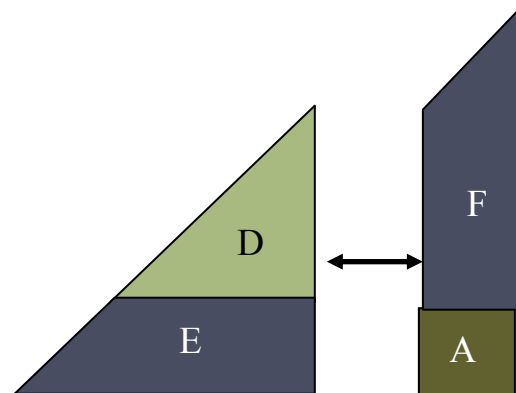
5. Join **strip set #1** to the short side of the  $6\frac{1}{8}$  half square triangle (G). Repeat for a total of four.



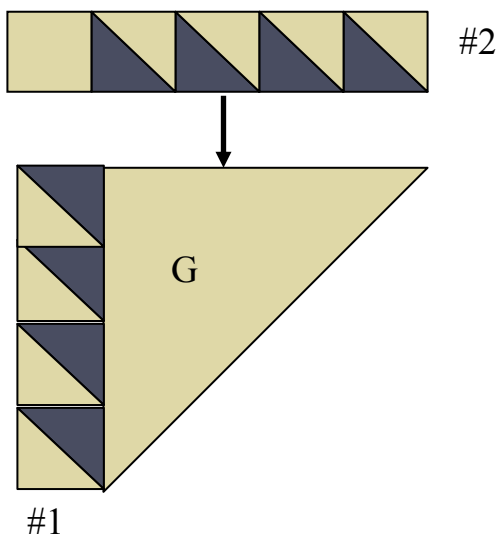
8. Attach (E), to the half square Triangle (D). Repeat for a total of four.



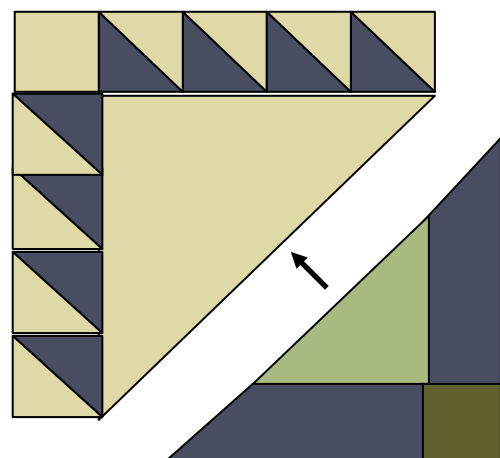
9. Combine **D/E** section to **F/A** section. Repeat for a total of four. This is your basket center.



6. Join **strip set #2** to the top side of the  $6\frac{1}{8}$  half square triangle (G). Repeat for a total of four.

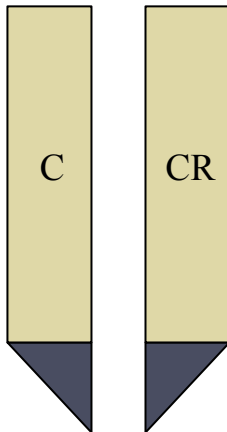


10. Attach basket center to basket handle/background. Repeat for a total of four.

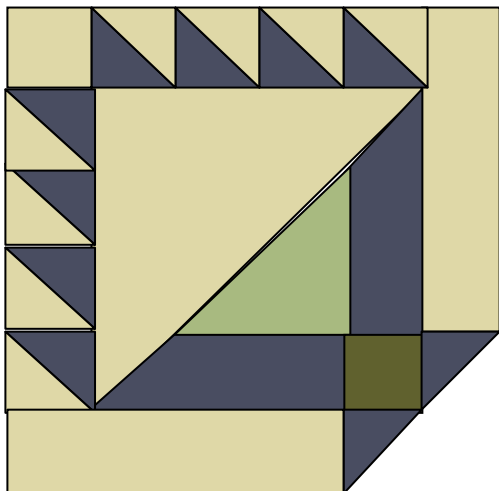


## Basket sewing instructions cont.

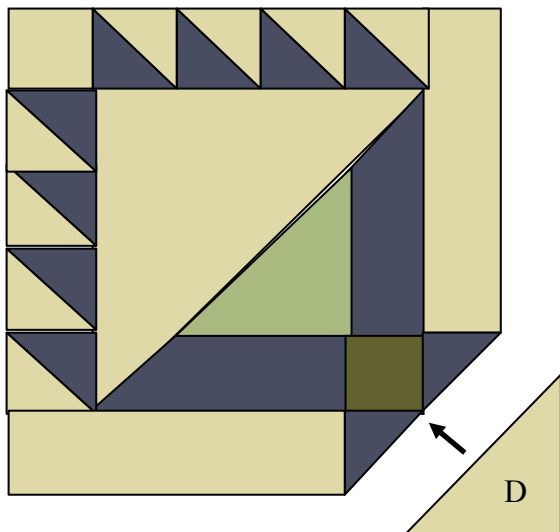
11. Add the half square **Blue** triangles (B) to the rectangle (C). Take note half of the finished B/C combos are worked in reverse. Creating **four** each for a total of eight legs.



12. Attach the legs to the sides of the basket center.



13. We are almost there. Sew the last piece (D), to the finish the basket bottom.



So, let's work on putting our quilt center together. Then we will tackle the border.

## Center Construction

First, let's create the wonderful triangle units attached to each side of our finished center block. See the picture for placement.

### Fabric E (Blue triangles)

- Cut **one**, 17-3/4" x 17-3/4" Square, cut in half diagonally, twice, making 4 triangles.

### Fabric J (Background)

- Cut **one**, 9-1/8" x 44" strip, sub-cut into **four**, 9-1/8" x 9-1/8" squares, cut in half diagonally once, to make 8 triangles.

1. Sew the long side of the small triangle to the short side of the blue triangle. Press. **Trim down to measure 8-1/2 wide by 16-1/2 long.**
2. Attach one triangle set to the top and bottom of our center block. See the diagram for placement.
3. Working with the colored picture for placement, sew a finished basket to both ends of the remaining 2 triangle sets. Attach to the center block sides.

Now we need to make a few H/L squares to complete our center.

### Fabric H (Peach floral)

- Cut **one**, 9-1/8" x 44" strip, sub-cut into **four**, 9-1/8" x 9-1/8" squares, cut in half diagonally once, to make 8 triangles.

### Fabric L (Background)

- Cut **one**, 9-1/8" x 44" strip, sub-cut into **four**, 9-1/8" x 9-1/8" squares, cut in half diagonally once, to make 8 triangles.
1. Sew both H and L triangles together, creating a square. Make eight H/L combos. Trim down to 8-1/2 x 8-1/2 squares.
  2. Using the picture as a guide, sew one H/L square to either side of each completed appliquéd half triangle/H combos. Creating four.
  3. Attach one triangle set to the top and bottom of our quilt center.



## Center Construction Cont.

Now is it just me, or are we getting somewhere?

1. It doesn't really matter which way you turn em', choose what makes you happy. Let's sew a finished corner to both ends of the remaining 2 triangle sets. Attach to the quilt center sides.
2. Wow! We have a beautiful quilt center. How about a border to tie it all together?

## Inner Border

### Fabric I (Blue plaid)

- Cut five, 1-1/2" x 44" strips, remove the sel-vage from the edge, sew together as one long strip and press.
- Out of that long border, measure and cut four, 1-1/2" x 51-1/2 inch long borders. Pin and attach to the quilt center. Sew in place.

## Border Blocks

### Diamond In A Square

#### Fabric A (Blue Center)

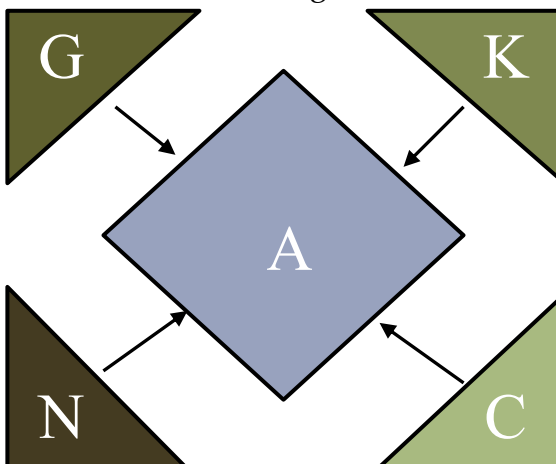
- Cut **three**, 4" x 44" strips. Sub-cut, twenty-two, 4" x 4" squares.

#### Fabric G

- Cut **one**, 3-3/8" x 44" strips. Sub-cut, **eleven**, 3-3/8" x 3-3/8" squares. Cut in half diagonally, creating **22** half-square triangles.

#### Repeat for Fabrics, K,C and N.

1. Sew the triangles onto the center square in the following order, see the diagram below. Chain piecing works wonderfully well. Press after each triangle addition.



## Border Blocks Cont.

### Double Irish Chain

We are going to be using rotary cutting and strip piecing. Fast and fabulous!

**\*\*It is important to press seams open after each new strip, this ensures your strip will lay nice and flat for the final cutting.**

#### Fabric A (Light Blue)

- Cut **12**, 1-1/2" x 44" strips.

#### Fabric L (Cream)

- Cut **4**, 1-1/2" x 44" strips.

#### Fabric F (Dark Blue)

- Cut **9**, 1-1/2" x 44" strips.

1. Using the diagram below for placement, sew sets of strips together.



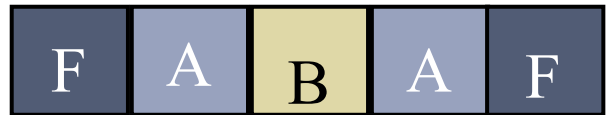
Strip Set #1



Strip Set #2



Strip Set #3



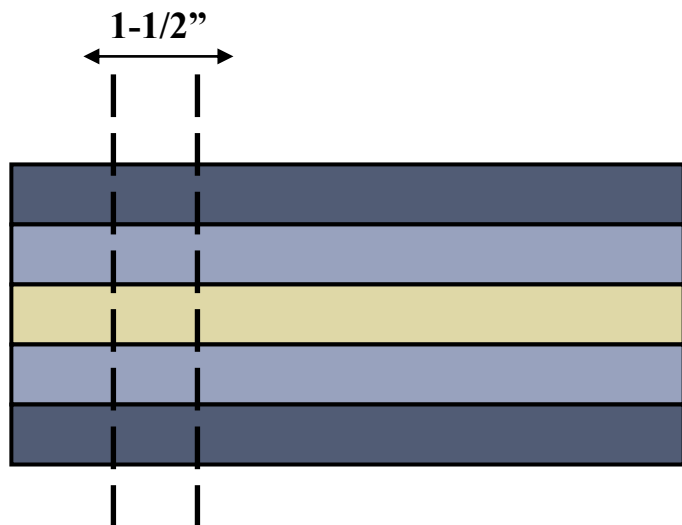
Strip Set #4



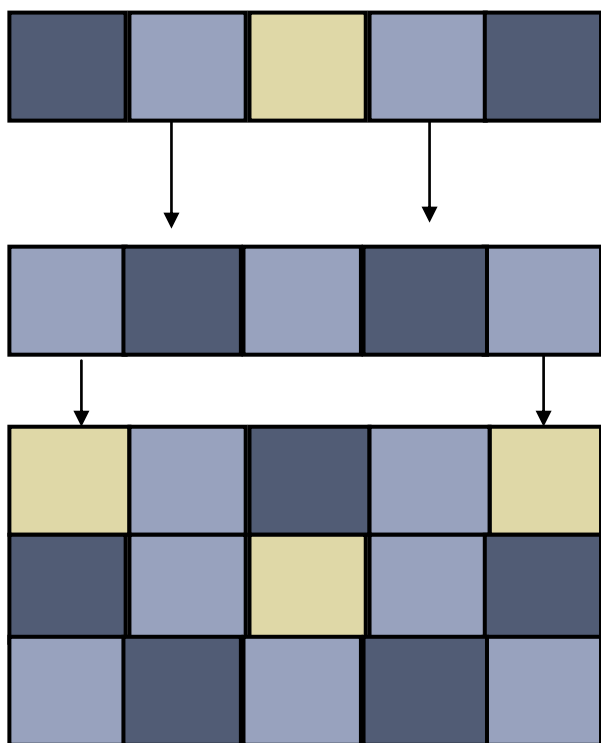
Strip Set #5

## Border Blocks Cont.

2. Turn each finished strip set horizontally and cut twenty-two, 1-1/2" x 5-1/2" strips. Cut one strip set at a time. Do not stack the strips together, it would be disastrous.



3. Sew your strip set together, creating 22 blocks.



4. Using the colored picture diagram for placement arrange the blocks to your pleasure. Sew them together in **two** sets of 10 (top & bottom) blocks and **two** sets of 11(sides), attach to the quilt center.

## Outside Border

Well, we are almost there!

### Fabric I (Blue plaid)

- Cut six, 2-1/2" x 44" strips, remove the sel-vage from the edge, sew together as one long strip and press.
- Out of that long border, measure and cut six, 2-1/2" x 65-1/2 inch long borders. Pin and attach to the quilt center.

Ta-da! Sit back and enjoy your beautiful creation. I hope that everyone has enjoyed the journey. Thanks ever so much for joining me. I would love to hear from you, any comments can be sent to:

vbd@satx.rr.com

www.bobbieashley.com

Cheers,

Bobbie

# Basket Templates

